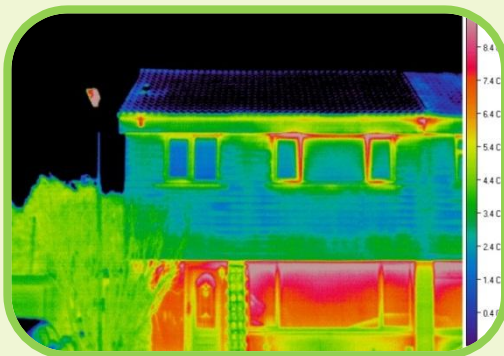


LEAP Case Study – Cavity Wall Insulation & Draught proofing

McConnell Road
Lochwinnoch
1970's build



- Two storey early 1970's build semi-detached house with 6 rooms.
- Cavity wall 'as built' no insulation. Loft insulation 250mm depth in early 2010. Some draughts.
- Connected to electrical grid and mains gas.
- 10years old gas combi boiler, central heating with radiators and gas fire in living room.
- Digital thermostat and heating programmer, radiators with Thermostatic Return Valves

Work required:

- Heat loss analysis – thermal imaging and draught test
- Cavity wall insulation
- Draught proofing

Ongoing:

- Change heating programmer settings twice a year when clock changes
- Comparison checks on best energy deals

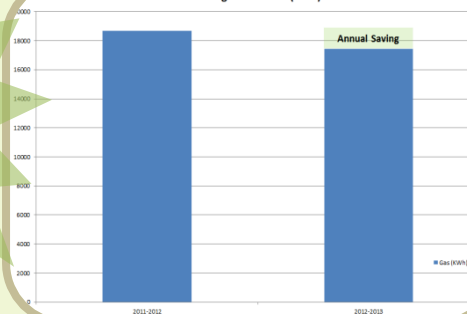
Next steps:

- Reduce electricity usage too!

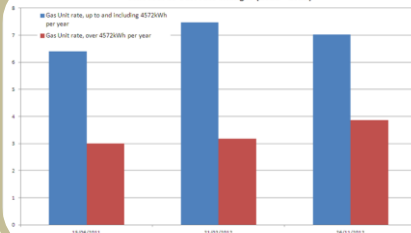
2012
Annual Saving

1241 KWh Gas
worth £50
0.25 tonnes
Carbon

Gas usage 2011-2013 (KWh)



Unit cost of Gas: rate changes (2011 - 2012)



Our story:

We have always been cost conscious including our energy bills and took the opportunity to get free analysis of our home through LEAP. The thermal image and draught test really showed us where heat was escaping from our home.

We had our cavity walls insulated under the Universal Home Insulation Scheme (UHIS) offer in early 2011 and also did a few items of simple draught proofing ourselves. Since then our home has not only felt much cosier and warm. Even with a rise in gas prices and an unusually cold winter the heating bill the next winter was £50 lower. Minimal effort for maximum gain!



McConnell Road Carbon Reduction

In addition to a warmer, more comfortable home with lower fuel bills, a quarter of a tonne of carbon emissions was saved in the first year even with below-average winter temperatures. The carbon reduction is expected to be much more in typical winters.

Carbon Calculations for McConnell Road		
Carbon calculations (2011/12 vs 2012/13):		
CO2e per kWh	0.204	
	2011-2012	2012-2013
	18693	17452
CO2e per annum (Kg)	3813	3560
CO2e per annum (tonnes)	<u>3.81</u>	<u>3.56</u>
CO2e per annum saving (tonnes)	<u>0.25</u>	

Cavity wall insulation essentials:

- Use a qualified, accredited and reputable supplier who will do the following as a minimum:
 - Check cavity is suitable for insulation
 - Confirm external wall surfaces are free from cracks or damage
 - Maintain sealing or venting requirements
 - Provide a full warranty and contact details.

Draught proofing

- Can be a DIY job
- Simple, low cost and suitable for most homes
- Works best with a draught test carried out first to pinpoint draughts

Green Deal Assessment Required!

Government incentives:

- A variety of support for lower cost insulation including Green Deal finance options and Scottish Green Homes Cashback Scheme which offers cash back for completed cavity wall insulation, loft insulation and draught proofing.
- Extra support for priority groups.

LEAP helps its local communities save energy, save money and care for our environment.

We provide free impartial advice on insulation, draught proofing, heating, renewable energy, The Green Deal, grants and subsidies.

We encourage renewable energy generation (community and domestic), food cooperatives, and lift sharing.

We run the not-for-profit LEAP car club.

All our advice is free, impartial, practical and tailored to you



Lochwinnoch • Kilbarchan
Howwood • Bridge of Weir